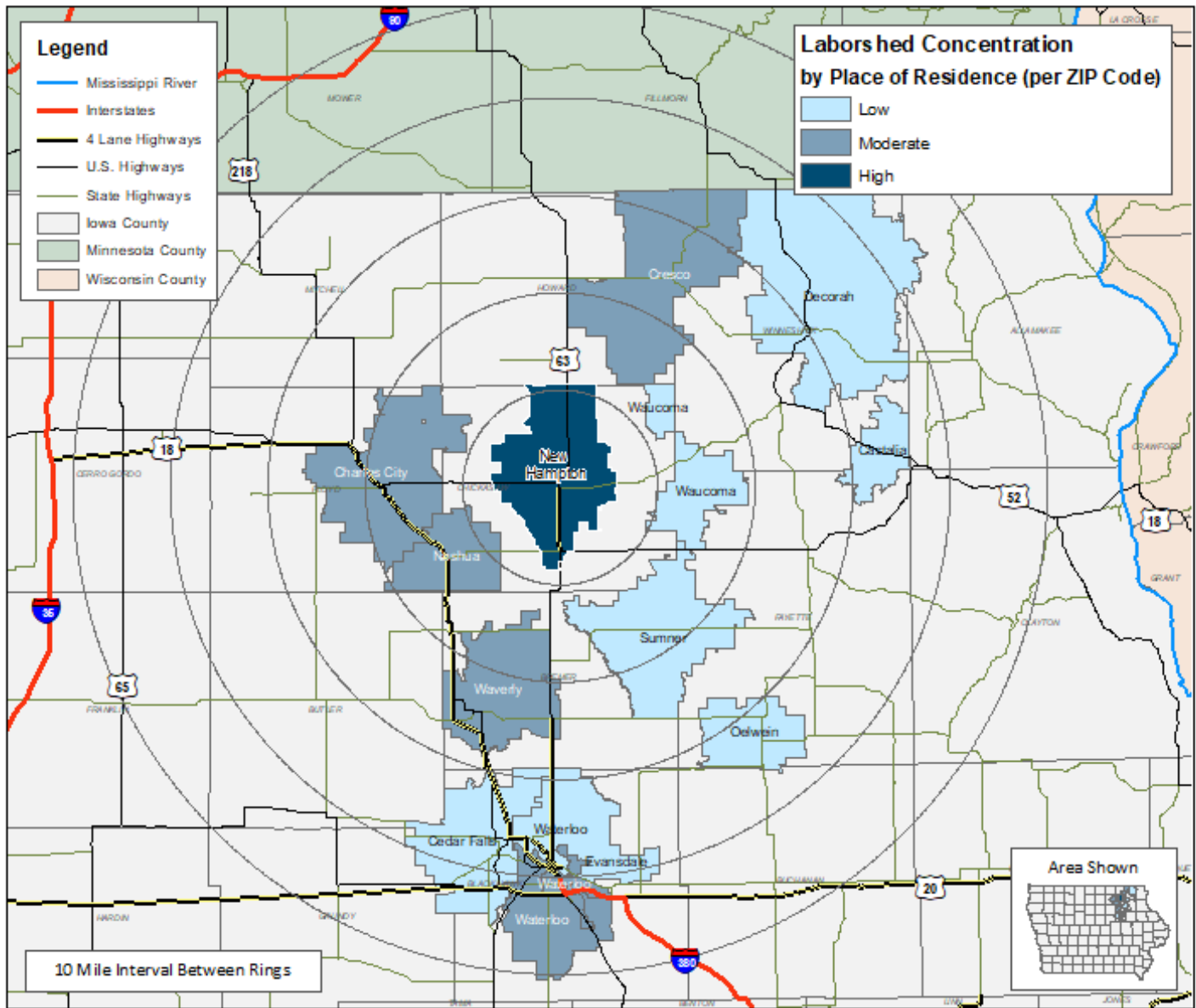


LABOR CHARACTERISTICS

WAREHOUSE & DISTRIBUTION

NEW HAMPTON, IA, IA LABORSHED AREA

CONCENTRATION OF RESPONDENTS WITHIN THE LABORSHED AREA
WITH TRANSFERABLE EXPERIENCE/SKILLS BY PLACE OF RESIDENCE



Workers who have transferable experience/skills in the industry are currently commuting an average of 13 miles one way for work. Those who are likely to change/accept employment are willing to commute an average of 25 miles one way for the right employment opportunity.

FOR MORE INFORMATION REGARDING THE NEW HAMPTON, IA LABORSHED, CONTACT:

New Hampton Economic Development
112 East Spring Street
New Hampton, IA 50659
Phone: 641-394-2070
Email: nheconomic12@gmail.com
www.newhamptonia.com

LABOR CHARACTERISTICS

WAREHOUSE & DISTRIBUTION

ESTIMATED AVAILABLE LABOR PER OCCUPATIONAL CATEGORY:

- Automotive Service Technicians and Mechanics - 2,226
- First-Line Supervisors of Mechanics, Installers, and Repairers - 1,113
- First-Line Supervisors of Production and Operating Workers - 1,484
- Heavy and Tractor-Trailer Truck Drivers - 2,968
- Inspectors, Testers, Sorters, Samplers, and Weighers - 1,482
- Installation, Maintenance, and Repair Workers, All Other - 3,710
- Laborers and Freight, Stock, and Material Movers, Hand - 2,228
- Light Truck or Delivery Services Drivers - 742
- Packers and Packagers, Hand - 371
- Production Workers, All Other - 2,597
- Production, Planning, and Expediting Clerks - 740
- Rail-Track Laying and Maintenance Equipment Operators - 744
- Team Assemblers - 1,111
- Transportation, Storage, and Distribution Managers - 372

AN ESTIMATED TOTAL OF **21,888** PEOPLE IN THE LABORSHED AREA

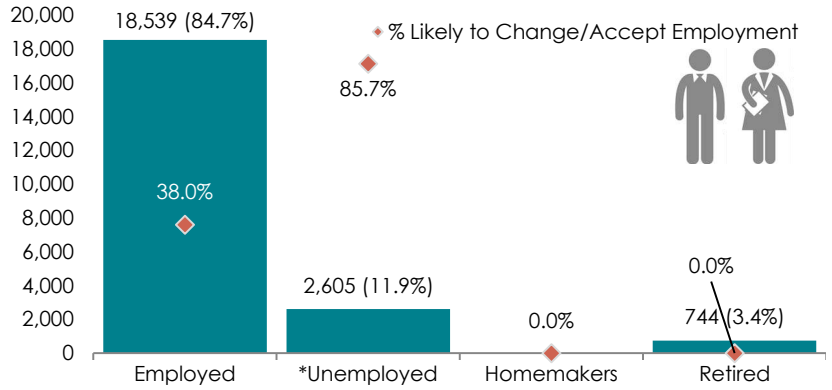
UNDEREMPLOYMENT (ESTIMATED):

- Low hours - 0.0%
- Low income - 1.7% (24)
- Mismatch of skills - 6.8% (96)
- Total - 8.5% (120)

(Individuals counted only once when estimating Total Underemployment.)



ESTIMATED TOTAL BY EMPLOYMENT STATUS (PERCENTAGE):



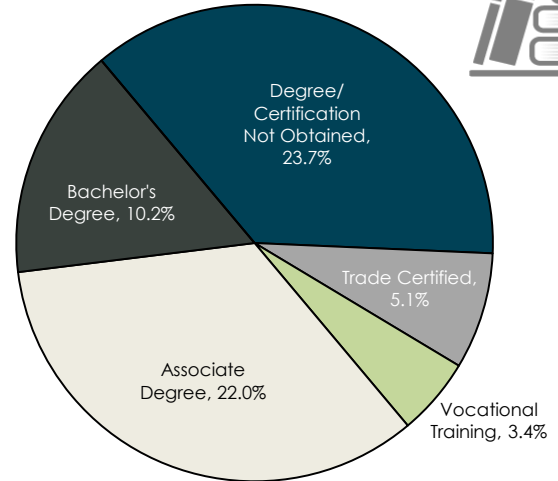
**Employment status is self-identified by the survey respondent. The unemployment percentage does not reflect the unemployment rate published by the U.S. Bureau of Labor Statistics, which applies a stricter definition.*

EMPLOYMENT STATS:

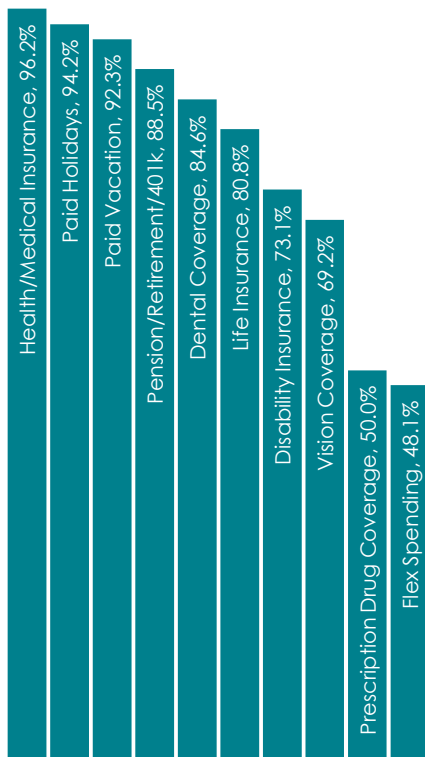
- 83.1% paid an hourly wage
- 96.6% are/were employed full-time
- 3.4% are/were employed part-time
- 9.8% are/were self-employed
- 14.0% hold two or more jobs
- Currently working an average of 45 hours/week

EDUCATIONAL LEVEL:

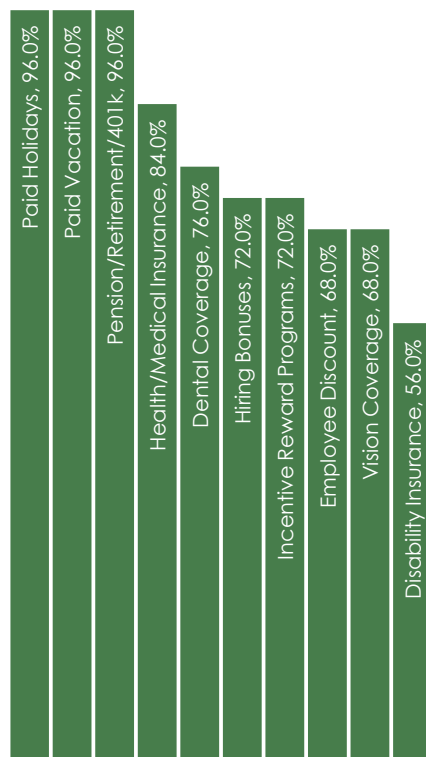
(64.4% HAVE AN EDUCATION BEYOND HIGH SCHOOL)



CURRENT BENEFITS:



DESIRED BENEFITS:



TOP JOB SEARCH RESOURCES:

(For those seeking employment opportunities, by use.)

- Internet - 67.9%
 - www.indeed.com
 - www.linkedin.com
 - www.facebook.com
 - www.iowaworks.gov
- Networking through friends, family or acquaintances - 48.2%
- IowaWORKS Centers - 30.4%
- Newspapers - 26.8%
 - *New Hampton Tribune*
 - *Waterloo-Cedar Falls Courier*
 - *Times Plain Dealer - Cresco*



LABOR CHARACTERISTICS

WAREHOUSE & DISTRIBUTION

OCCUPATION	OCCUPATIONAL CODE	MEAN WAGE	ENTRY WAGE	EXPERIENCED WAGE	MEDIAN WAGE	MEAN ANNUAL SALARY
Aircraft Mechanics and Service Technicians	49-3011	\$30.32	\$23.97	\$33.50	\$31.41	\$63,073
Automotive Body and Related Repairers	49-3021	\$20.20	\$14.27	\$23.17	\$19.37	\$42,020
Automotive Service Technicians and Mechanics	49-3023	\$22.16	\$14.55	\$25.96	\$20.33	\$46,088
Bus and Truck Mechanics and Diesel Engine Specialists	49-3031	\$22.55	\$16.35	\$25.65	\$22.78	\$46,897
Cargo and Freight Agents	43-5011	\$19.84	\$13.20	\$23.16	\$19.94	\$41,269
Cleaners of Vehicles and Equipment	53-7061	\$14.55	\$10.16	\$16.75	\$14.15	\$30,267
Dispatchers, Except Police, Fire, and Ambulance	43-5032	\$25.47	\$14.99	\$30.71	\$19.25	\$52,987
First-Line Supervisors of Mechanics, Installers, and Repairers	49-1011	\$36.21	\$24.59	\$42.02	\$34.96	\$75,322
First-Line Supervisors of Production and Operating Workers	51-1011	\$31.68	\$20.67	\$37.18	\$28.14	\$65,890
Heavy and Tractor-Trailer Truck Drivers	53-3032	\$21.62	\$16.27	\$24.29	\$20.06	\$44,960
Helpers--Installation, Maintenance, and Repair Workers	49-9098	\$17.72	\$13.84	\$19.66	\$17.94	\$36,854
Helpers--Production Workers	51-9198	\$17.00	\$13.89	\$18.55	\$16.96	\$35,350
Industrial Machinery Mechanics	49-9041	\$25.27	\$19.37	\$28.22	\$25.25	\$52,560
Industrial Truck and Tractor Operators	53-7051	\$18.98	\$15.14	\$20.90	\$18.53	\$39,481
Inspectors, Testers, Sorters, Samplers, and Weighers	51-9061	\$20.43	\$15.00	\$23.14	\$19.95	\$42,487
Installation, Maintenance, and Repair Workers, All Other	49-9099	\$20.11	\$14.08	\$23.13	\$18.25	\$41,832
Laborers and Freight, Stock, and Material Movers, Hand	53-7062	\$16.92	\$12.98	\$18.89	\$17.18	\$35,191
Light Truck or Delivery Services Drivers	53-3033	\$20.05	\$12.18	\$23.99	\$16.33	\$41,707
Logisticians	13-1081	\$35.18	\$19.47	\$43.03	\$34.68	\$73,165
Machine Feeders and Offbearers	53-7063	\$17.08	\$13.51	\$18.86	\$17.03	\$35,516
Maintenance and Repair Workers, General	49-9071	\$21.04	\$13.99	\$24.56	\$21.29	\$43,754
Motor Vehicle Operators, All Other	53-3099	\$15.10	\$11.66	\$16.82	\$14.57	\$31,417
Packers and Packagers, Hand	53-7064	\$16.01	\$13.15	\$17.44	\$16.95	\$33,298
Production Workers, All Other	51-9199	\$14.80	\$8.41	\$18.00	\$13.73	\$30,787
Production, Planning, and Expediting Clerks	43-5061	\$26.10	\$16.63	\$30.83	\$24.43	\$54,280
Shipping, Receiving, and Traffic Clerks	43-5071	\$17.83	\$13.38	\$20.05	\$17.49	\$37,084
Transportation, Storage, and Distribution Managers	11-3071	\$41.35	\$30.20	\$46.92	\$37.04	\$86,004
Weighers, Measurers, Checkers, and Samplers, Recordkeeping	43-5111	\$17.00	\$12.84	\$19.08	\$16.59	\$35,360

The 2021 Iowa Wage data for the New Hampton, IA Laborshed area was produced by the Labor Force & Occupational Analysis Bureau to provide communities local information on wages by occupation. The source of the wage and employment data is based on the May 2020 OES estimates. Additional occupational wage and employment data can be found at www.iowalmi.gov/laborshed.